

MEET THE *CJON* ASSOCIATE EDITORS

The following oncology nurses compose the Editorial Board of the *Clinical Journal of Oncology Nursing (CJON)* in 2009. They all are involved in clinical care and support the mission of *CJON*, which is to provide practical information necessary to care for patients and their families across the cancer continuum and to develop publication skills in oncology nurses. Each associate editor coordinates one column, and all are receptive to working with readers who are interested in authoring columns. The associate editors welcome your comments, ideas, and suggestions for column topics. Contact information for each associate editor can be found at the end of each description.



Barb Henry, APRN-BC, MSN, has been a nurse for 26 years and a psychiatric nurse practitioner for 16 years. In her private practice, Psycho-Oncology Consultants, LLC, she provides psychiatric services and medications for cancer survivors, family members, and staff. She also works at Central Clinic, part of the University of Cincinnati, with adults who have psychiatric, chemical dependency, forensic, or dual diagnoses.

Prior to her current position, Barb provided psychiatric services to clients in a blood and marrow transplantation program for a large outpatient oncology group. She is the past president of the Cincinnati Tri-State Chapter of the Oncology Nursing Society (ONS) and a member of the Complementary Integrative Therapies Special Interest Group (SIG).

Barb is the associate editor for the Heart of Oncology Nursing column. She can be reached at mhap65@ucmail.uc.edu.



Marcelle Kaplan, RN, MS, AOCN®, has been the breast oncology clinical nurse specialist at Weill Cornell Medical Center of New York-Presbyterian Hospital for the past 12 years and has been leading a weekly breast cancer support group for that length of time. She has more than 27 years of experience in a variety of oncology nursing roles. Marcelle has served as president of the Oncology Nursing Certification Corporation, chair of the ONS

Nominating Committee, chair of the OCN® Test Development Committee, and has been closely involved in the creation of the Certified Breast Care Nurse (CBCN) examination.

Marcelle is the editor of *Understanding and Managing Oncologic Emergencies: A Resource for Nurses* (ONS, 2006), a published author of articles and book chapters, and a speaker on a variety of topics, including obesity as it relates to cancer risk, advances in breast imaging, and cancer prevention and detection guidelines. She is a member of the ONS Breast Care and CNS SIGs, the ONS New York City Chapter, the institutional review

board of Cornell Medical College, and the Board of Advisors for the Manhattan division of the American Cancer Society (ACS).

Marcelle is the associate editor for the Supportive Care column and can be reached at mkaplan@nyp.org.



Debra E. Lyon, RN, PhD, FNP, is an associate professor of nursing at Virginia Commonwealth University in Richmond. She is a center scientist in the Massey Cancer Center, and her research has been funded by the National Cancer Institute. She has served as a grant reviewer for ONS and the Department of Defense Breast Cancer Program. She was a member of the ONS Research Advisory Panel's

evidence-based practice subgroup.

Debra is the associate editor for the Diagnostic Reasoning column. She can be reached at delyon@vcu.edu.



Lisa Hartkopf Smith, RN, MS, AOCN®, CNS, is a hematology/oncology clinical nurse specialist at Riverside Methodist Hospital in Columbus, OH, where she has been working in this role for the past 19 years. Previously, Lisa was a clinical nurse specialist at Fox Chase Cancer Center in Philadelphia, PA, and at the Medical University of Ohio in Toledo. Her career in oncology has spanned more than 27 years, with 26

years as a clinical nurse specialist. In addition to working in the clinical setting, Lisa has served as an associate editor for the *Oncology Nursing Forum*, freelanced as a medical writer for the pharmaceutical industry, and taught nursing at Ohio State University and the University of Toledo. Her interests include chemotherapy, pain and palliative medicine, and safety.

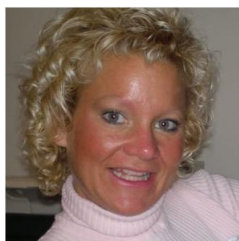
Lisa is the associate editor for the Safety column. She can be reached at lsmith2@ohiohealth.com.

Digital Object Identifier: 10.1188/09.CJON.E1-E2



Susan K. Steele-Moses, DNS, APRN, AOCN®, is an adult health clinical nurse specialist specializing in the area of medical oncology. She has been an oncology nurse for 26 years and obtained her associate degree in nursing in 1982, baccalaureate in nursing in 1988, master's degree in nursing in 1990, and a doctorate in nursing science in 2004 from Louisiana State University (LSU) Health Sciences Center in New Orleans. Her dissertation focus was in the area of breast cancer early detection, and she recently completed her post-doctorate with Victoria Champion, DNS, RN, FAAN, at Indiana University through the Walther Cancer Center. She currently is the program director of nursing research at Our Lady of the Lake Regional Medical Center in Baton Rouge, LA. Previously, she served as an assistant professor of nursing at LSU Health Sciences Center and Our Lady of the Lake College. Susan brings with her a wealth of research knowledge; she has published extensively and received intramural and extramural funding to support her program of research. She now is using her research expertise to lead clinical research teams in applying research findings to their clinical practice.

Susan is the associate editor of the Evidence-Based Practice column and can be reached at sus5564@ololrnc.com or susanksteele@aol.com.

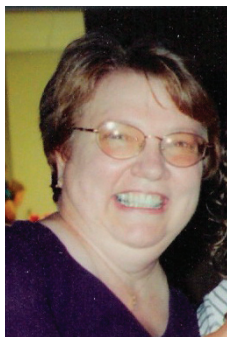


JeanAnne Johnson Talbert, APRN-BC, FNP, MSN, AOCN®, DHA, has been an oncology nurse for 11 years. She graduated in 1998 from the Family Nurse Practitioner program at Georgetown University in Washington, DC, and currently is finalizing her dissertation for her doctorate degree in health-

care administration. She has clinical experience in medical oncology and bone marrow/stem cell transplantation in an urban and a rural setting. She recently transitioned to a leadership position as the chief clinical officer at Mountain View Hospital in Utah. This position offers her the ability to educate and develop nursing staff in the oncology arena and push improvements to the oncology services provided at the hospital. She has presented

several lectures to nurses on cancer care and was a contributor and presenter for HCA's Cancer Care Core Curriculum.

JeanAnne is the associate editor for the Professional Issues column. She can be reached at jeanne.talbert@mountainstarhealth.com.



Patricia A. Weiss, RN, MSN, OCN®, CCRP, has been a nurse for 33 years, with 29 years in oncology. Her experience includes inpatient and outpatient chemotherapy. She currently is working in solid tumor clinical trials with The Center for Hematology and Oncology Molecular Therapeutics with the Cleveland Clinic in Ohio. She has been involved in oncology drug research for 10 years. Patricia also is an adjunct teacher at Cuyahoga Community College Nursing School. She is a past president of her local ONS chapter and a Leadership Development Institute graduate. She has two adult children and one grandchild. She also is an avid quilter and doll maker.

Patricia is the associate editor for the Oncology Myths and Legends column. She can be reached at weisspa@sbcglobal.net.



Debra L. Winkeljohn, RN, MSN, AOCN®, CNS, is the clinical director at Hematology Oncology Associates, where she has been employed for the past five years. Her current position involves management, research, and seeing patients as a clinical nurse specialist. She previously was employed as a chemotherapy nurse for a gynecology-oncology office. She has 21 years of oncology experience, with 15 years as a staff nurse on an oncology unit at St. Joseph Medical Center in Albuquerque, NM. Debra has been a member of ONS since 1988 and also is a member of the Albuquerque Chapter of Oncology Nurses. She has one daughter, two horses, and two dogs. She loves to read, go horseback riding, and watch her daughter play basketball.

Debra is the associate editor for the Oncology Nursing 101 column and can be reached at dwinkeljohn@comcast.net.